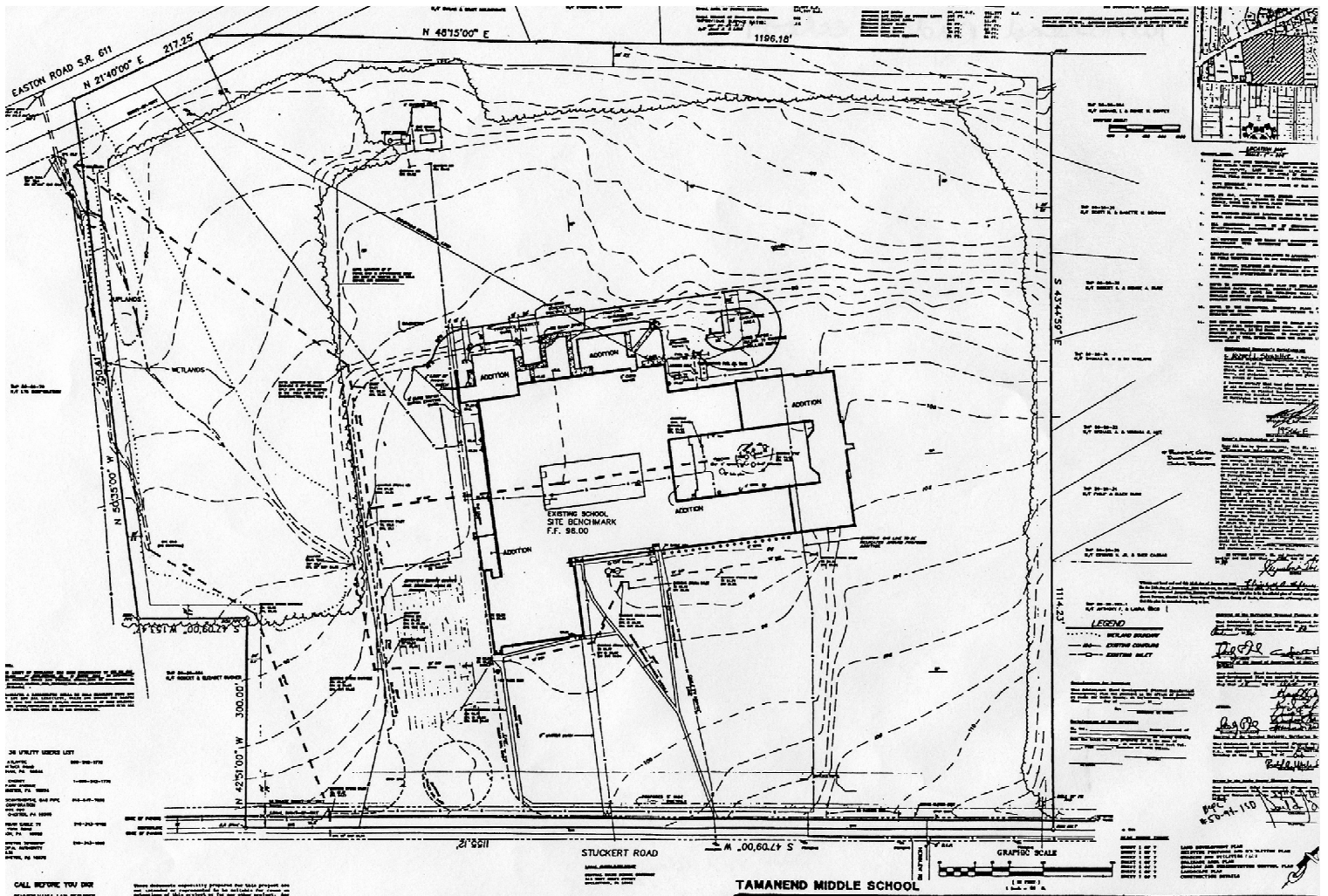


# 150001 – Tamanend Middle School



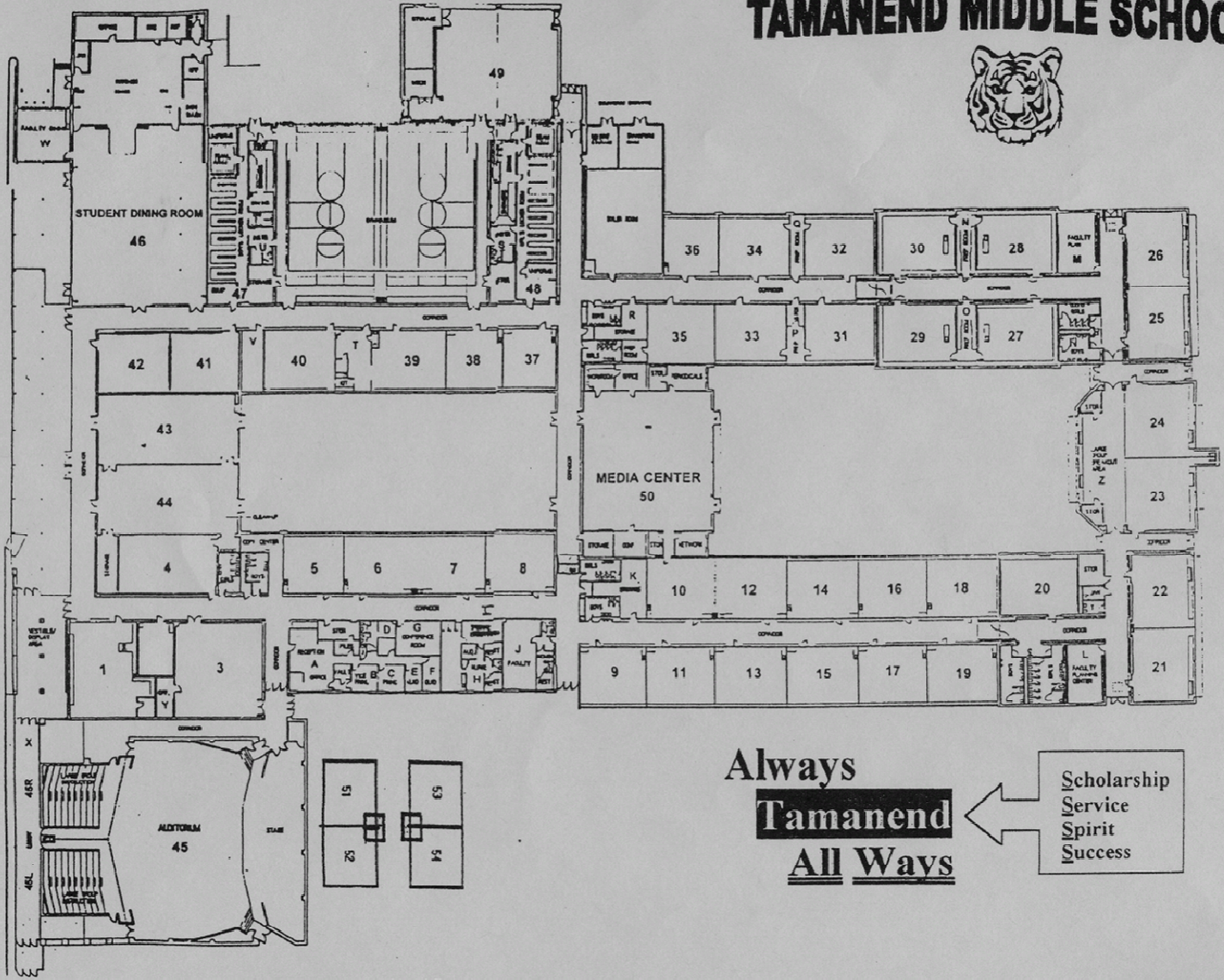


#150001 Warrington Township,  
Bucks County

Site Plan of Tamanend Middle School

Warrington Township, Bucks County #150001

# TAMANEND MIDDLE SCHOOL



Always  
**Tamanend**  
All Ways

Scholarship  
Service  
Spirit  
Success

Floor Plan of Tamanend Middle School

150001; Tamanend Middle School. This school is located at 1492 Stuckert Road, Warrington, Pennsylvania, in Warrington Township, Bucks County. It is part of the Central Bucks School District. The 1959 school building is set far back from Stuckert Road behind a large open field. An original parking area is located to the southwest of the building, accessed via driveways on either side of a landscaped circle with ornamental trees and a school sign. Part of the parking area was fenced in and converted to tennis courts; however, these have since been converted back to parking space. A paved driveway and circular drive extend across the northwest side of the school for school bus turnaround access. Open fields surround the school to the east, north, and northwest. These fields contain two baseball fields, and original goal posts. Two interior courtyards are located within the school building. One features multiple ornamental trees. The other one features trees, bushes, and a small pond dating to ca. 2000. A flagpole was moved from the southeast side of the building to the southwest side of the building (Cathy Begg, pers. com., April 19, 2006).

The original school building was an A-plan structure that has since been converted into a "figure-8" form by later additions. The school features interior hallways with classrooms on either side. An expanded library is located in the center section of the "8," flanked by two open courtyards. An original gymnasium, a cafeteria addition, and an auditorium addition extend from the basic "8" plan. The original ca. 1959 school building is a one-story concrete-block structure with brick veneer walls. It sits on a concrete foundation. The covering of the flat roof is unknown. An interior chimney is brick. There is no longer an obvious main façade or entrance to the school, nor is there a main lobby. The doors functioning as the main entrance are sets of metal and glass doors sheltered under an original overhang with a flat metal roof supported by metal posts. The original school building is lit by picture windows with awning sash. Some of the windows feature sections of porcelain enameled steel. Some exterior walls feature an expanse of open metal grate overhangs over the windows. Additions to the building reflect the original architecture, including an attempt to match brickwork, windows, and overhang grates. The ca. 1990 auditorium is located at the southern corner of the school. The 1995 cafeteria is located at the eastern corner of the school, replacing original wood shop rooms that were dismantled. An original cafetorium, located at the southwest end of the school, was converted to classrooms in 1995. A 1995 classroom addition extends across the northeast end of the school, changing the A-plan to a "figure-8" form. The library was also expanded ca. 1990. A ca. 1980s auxiliary gymnasium is appended to the original gymnasium. One-story modular classroom units, ca. 2000, are located on the southeast side of the school.

Original hallways feature combinations of brick walls, stuccoed walls, and wood paneling. They feature terrazzo floor tiles, acoustic ceiling tiles, water fountains with colored tiled backsplashes, and replacement lockers (ca. 1990s). Classroom entrances feature wood doors, each with a glass pane and a large single-pane sidelight. The original gymnasium features wood floors, wood bleachers, concrete-

block walls, acoustic ceiling tiles and a overhead truss system, and a mix of original and newer permanent sports equipment. The original cafetorium was converted into classrooms for other uses and original features, such as a stage, are gone or obscured. The library was expanded and renovated with new materials. Specialized classrooms include, or have included, wood shops, science rooms, home economics rooms, and art rooms.

The original school building was constructed in 1959 as a junior high school in response to housing development and growing population demands. It was the second junior high school in the school district, following Lenape Junior High School in 1956. Tamanend functioned as a junior high school until 1987 when it was empty for a year due to lack of enrollment numbers. The school was reopened and operated as an elementary school until 1990. The school reopened for the 1990-91 school year as a middle school. Major construction campaigns to expand and renovate the school took place ca. 1990 and 1995. The school appears to have been named for a well-known member of the Lenni Lenape (Delaware) tribe identified alternately as Tamenend, Tamina, or Tammany, who lived in the lower Bucks County area in the late seventeenth century.

(Cathy Begg, pers. com., April 19, 2006) with information from various members of the school staff including Principal Alan Hershman.  
Sections of articles on Tamanend, provided by C. Begg.

#### United States Geological Survey

1999 *Doylestown SE, PA Aerial Photograph*. USGS Reference Number  
a 40075-C2-03-PHT. Created on April 24, 1999.

1999 *Doylestown, PA Quadrangle*. 7.5 minute series. Topography  
b compiled 1999. Planimetry derived from imagery taken 1999 and  
other sources. Survey current as of 1953. Denver, CO.



*Aerial Photographs of Tamanend Middle School*



More Photos of Tamanend Middle School

